

NAAATP

WEBINAR
SERIES



NATIONAL ASSOCIATION[®]
OF
ADDICTION TREATMENT PROVIDERS

**Beyond the Rainbow:
LGBTQ+ Care is Trauma Informed Care**

Beck Gee – Director of Business Operations, Visions Adolescent Treatment Centers

Jordan Held – President & Founder, Relentless Pursuit Therapy & Consulting, Co

June 13, 2024



Presentation Outline

Intro

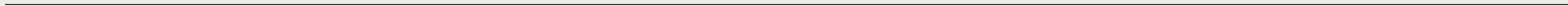
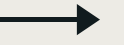
Privilege

Trauma Informed Care

Addressing Specifics

Microaggressions

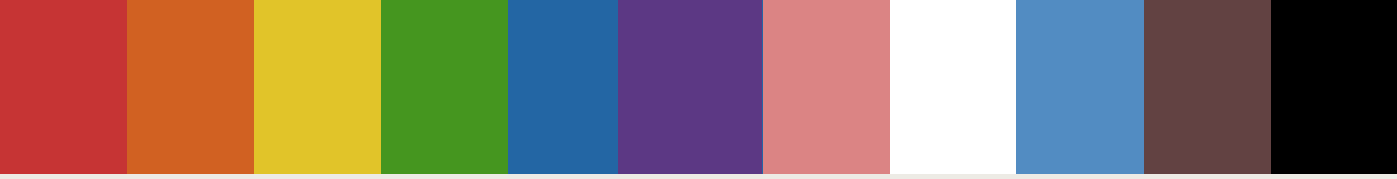
Question & Answer





Initial Thoughts

Why is it important to be here today?
What does cultural humility mean to me?



Land Acknowledgement

White

Jewish

Gay

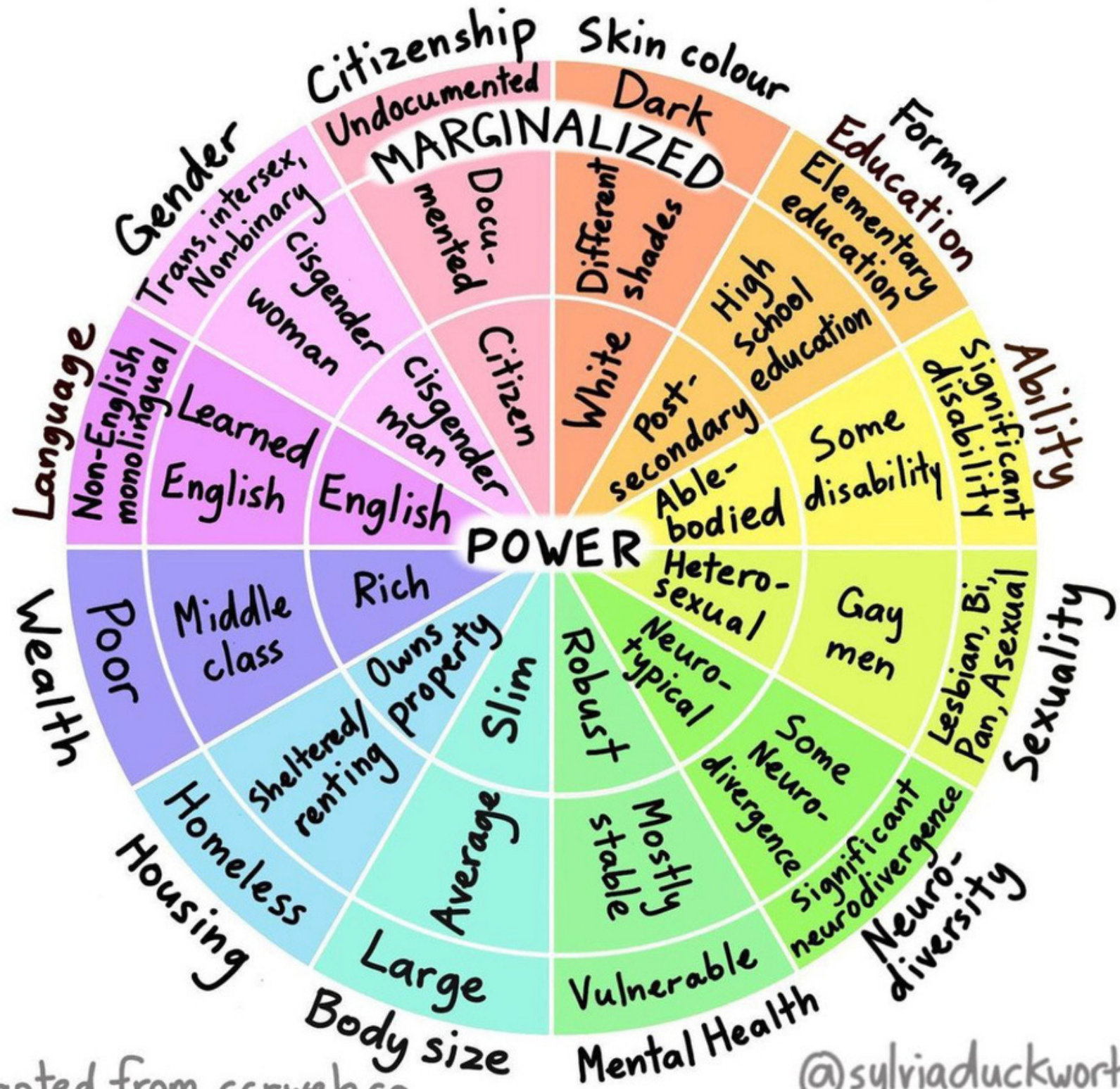
Transgender

Male

Privilege

Acknowledgement

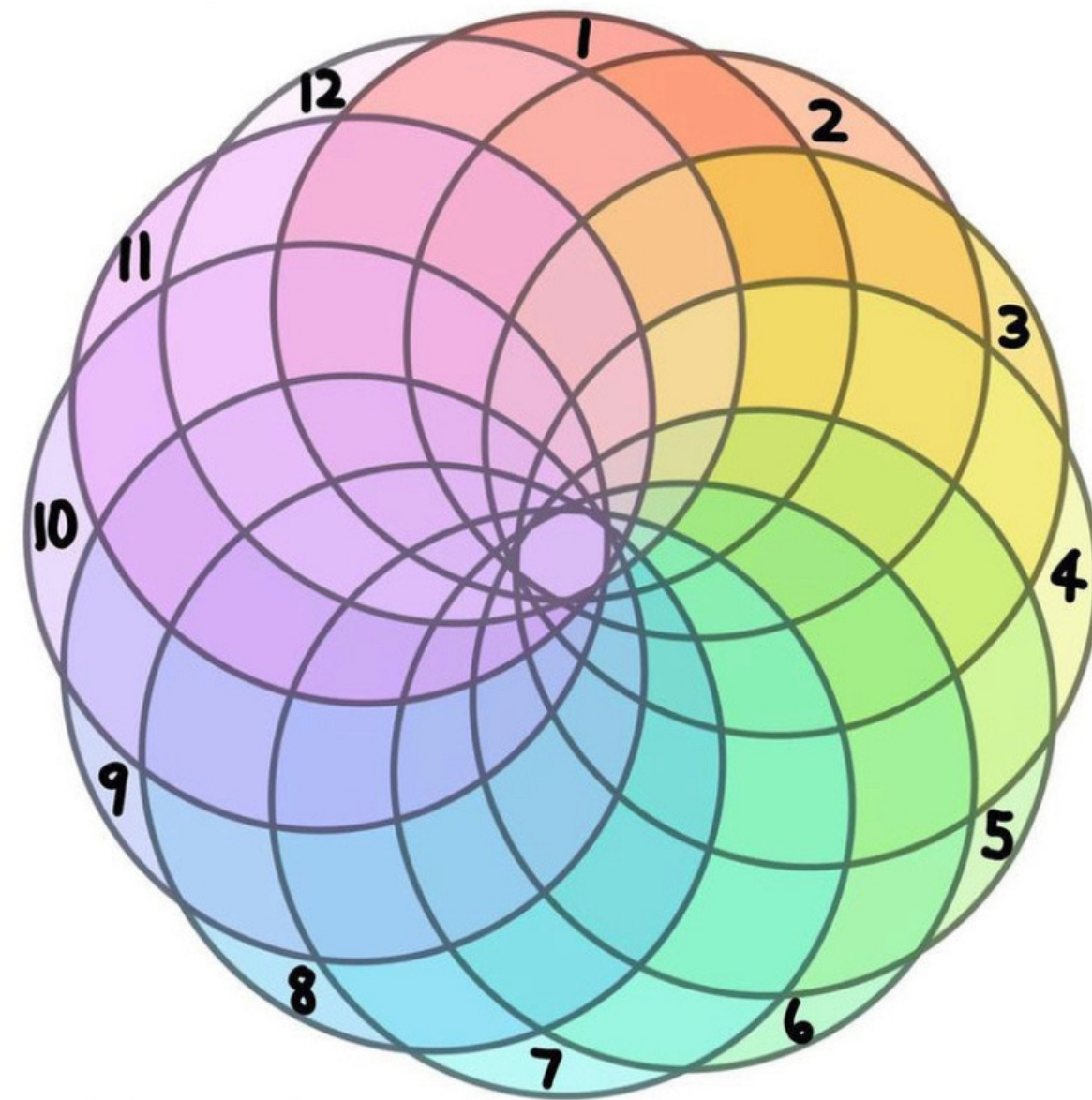
WHEEL OF POWER/PRIVILEGE



Adapted from ccrweb.ca

@sylviaaduckworth

INTERSECTIONALITY



- 1 Race
 - 2 Ethnicity
 - 3 Gender identity
 - 4 Class
 - 5 Language
 - 6 Religion
 - 7 Ability
 - 8 Sexuality
 - 9 Mental health
 - 10 Age
 - 11 Education
 - 12 Body size
- (...and many more...)

Intersectionality is a lens through which you can see where power comes and collides, where it locks and intersects. It is the acknowledgement that everyone has their own unique experiences of discrimination and privilege.

- Kimberlé Crenshaw -

@sylviaaduckworth



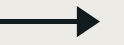
More on Privilege

Do you ever fear that you will receive verbal abuse, physical intimidation, or be arrested when you use a public restroom?

Has any medical provider asked about your genitals when you came in for a cold?

Have you ever had to disclose your gender identity and /or sexual orientation when you did not want to?

How else could cisgender/heterosexual privilege show up in your work?



When have you not belonged?

What did it feel like?

When have you belonged?


What did it feel like?

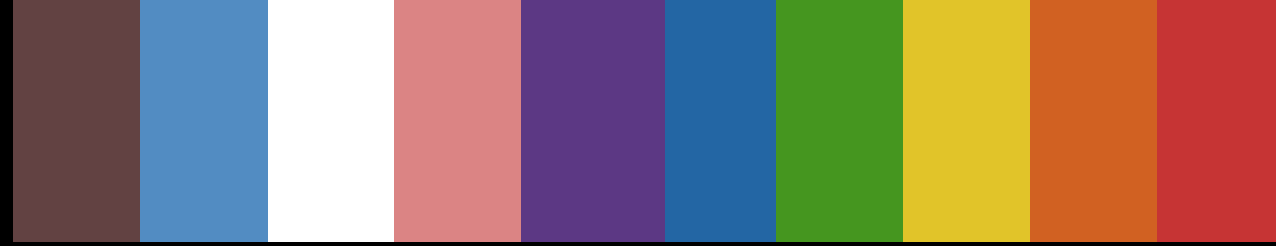
What does your organization do to foster belonging?

Where do we need to do more work as it relates to LGBTQ+ people specifically?

→

What Does it Mean to Belong?

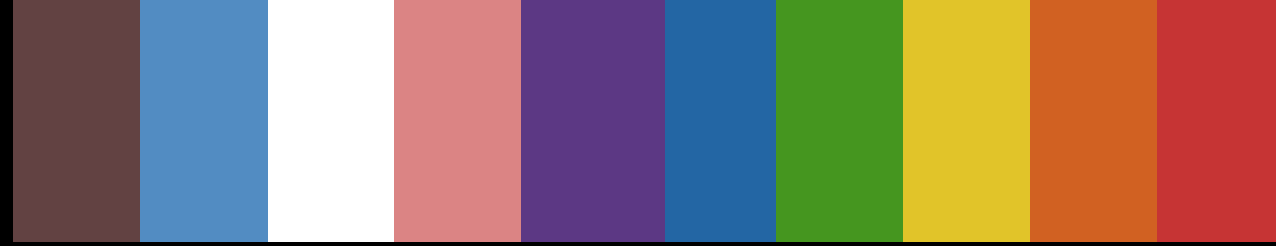




Sexuality is who you go to
bed with.

Gender is who you go to
bed as.





Trauma Informed Care & the LGBTQ+ Community

Vicarious Trauma



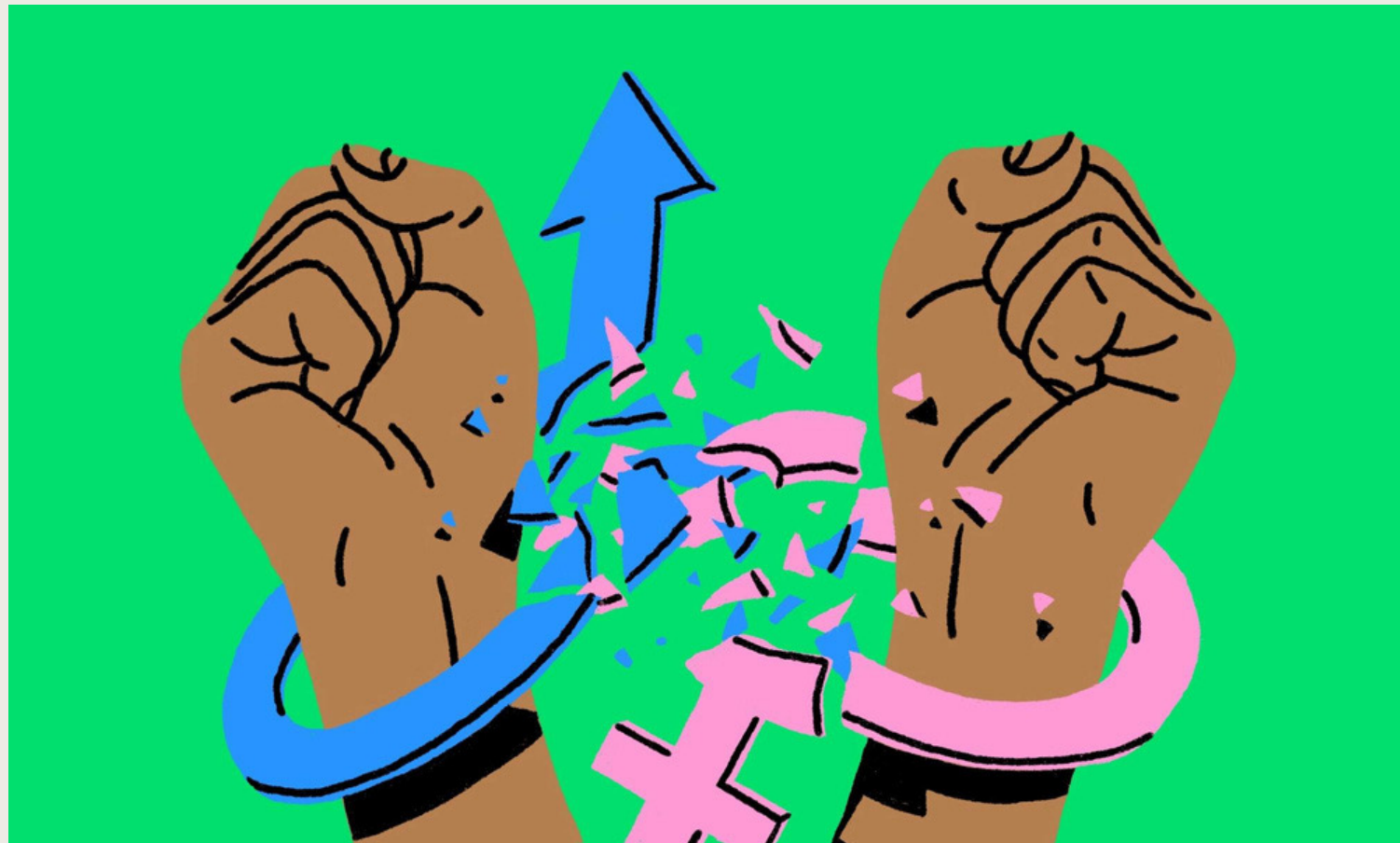
Process of change resulting
from empathetic engagement
with trauma survivors



In what ways does the LGBTQ+ community experience vicarious trauma?



Trauma of Gender

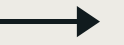


The rigidity of gender, gender roles, gender expectations continue to impact individuals

In what ways does the LGBTQ+ community experience gender trauma?



Family Trauma



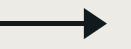
Experiencing rejection, loss, abuse in the family as it pertains to gender or sexuality



In what ways does the LGBTQ+ community experience family trauma?



Trauma of Loss



Grief and loss has an impact on individuals in the LGBTQ+ Community

In what ways does the LGBTQ+ community experience grief and loss?



Trauma of Invisibility



In a community of acceptance and love, many feel invisible or feel unseen



In what ways does the LGBTQ+ community experience invisibility?



Societal Trauma →



Experiences of current events, being political pawns, & fear-based culture

In what ways does the LGBTQ+ community experience societal trauma?



SAFETY IS NOT THE
ABSENCE OF THREAT...

IT IS THE PRESENCE
OF CONNECTION



Questions & Answers



Beck Gee AMFT
bgee@visionsteen.com

@relentlesspursuittherapy



@visionsteen

Jordan Held LCSW
jordan@rpthrapyco.com